



***South Carolina Department of Health and Environmental Control***  
*Healthy People Healthy Communities*

**SCAFP Meeting**  
**June 9, 2023**

# **Top Public Health Issues in South Carolina**

# Leading Causes of Mortality

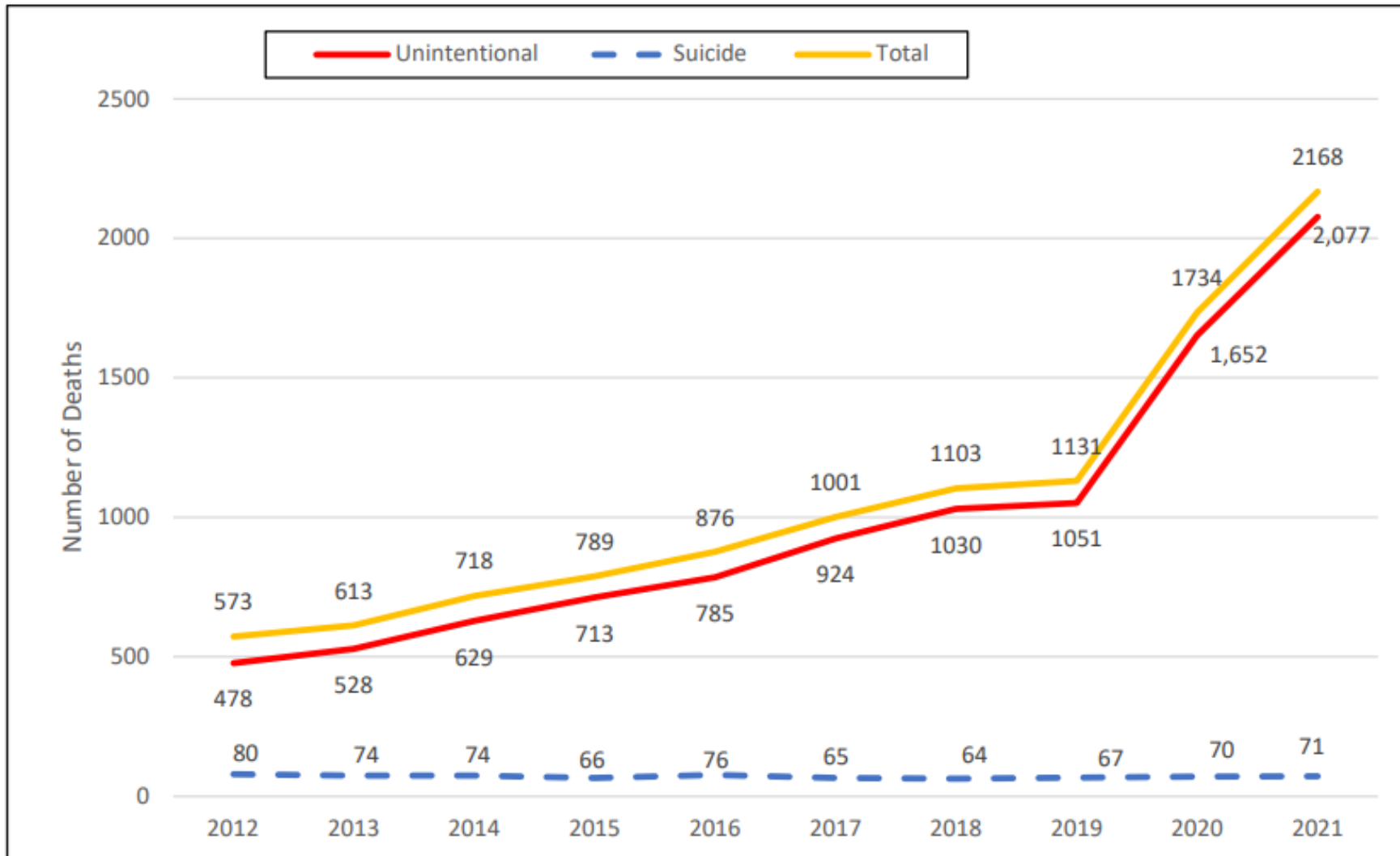
Mortality from Ten Leading Causes of Death by Race  
 South Carolina, 2020  
 (Residence Data)

Cause of Death (ICD-10 Code)	Total		White		Black and Other	
	Number	Percent	Number	Percent	Number	Percent
<b>All Causes</b>	61,238 *	100.0	44,178	100.0	17,020	100.0
<b>Ten Leading Causes, All Ages</b>	44,122 *	72.1	31,970	72.4	12,129	71.3
Diseases Of Heart (I00-I09,I11,I13,I20-I51)	11,386 *	18.6	8,278	18.7	3,103	18.2
Malignant Neoplasms (C00-C97)	10,793 *	17.6	8,021	18.2	2,766	16.3
COVID-19 (U071)	5,283 *	8.6	3,339	7.6	1,942	11.4
Accidents (V01-X59,Y85-Y86)	4,189 *	6.8	3,165	7.2	1,020	6.0
Chronic Lower Respiratory Diseases (J40-J47)	3,030 *	4.9	2,548	5.8	481	2.8
Cerebrovascular Diseases (I60-I69)	2,880 *	4.7	1,997	4.5	882	5.2
Alzheimer's Disease (G30)	2,574	4.2	2,110	4.8	464	2.7
Diabetes Mellitus (E10-E14)	1,943 *	3.2	1,121	2.5	820	4.8
Chronic Liver Disease and Cirrhosis (K70,K73-K74)	1,030	1.7	819	1.9	211	1.2
Nephritis, Nephrotic Syndrome and Nephrosis (N00-N03)	1,014 *	1.7	572	1.3	440	2.6
<b>All Other Causes</b>	17,116 *	27.9	12,208	27.6	4,891	28.7

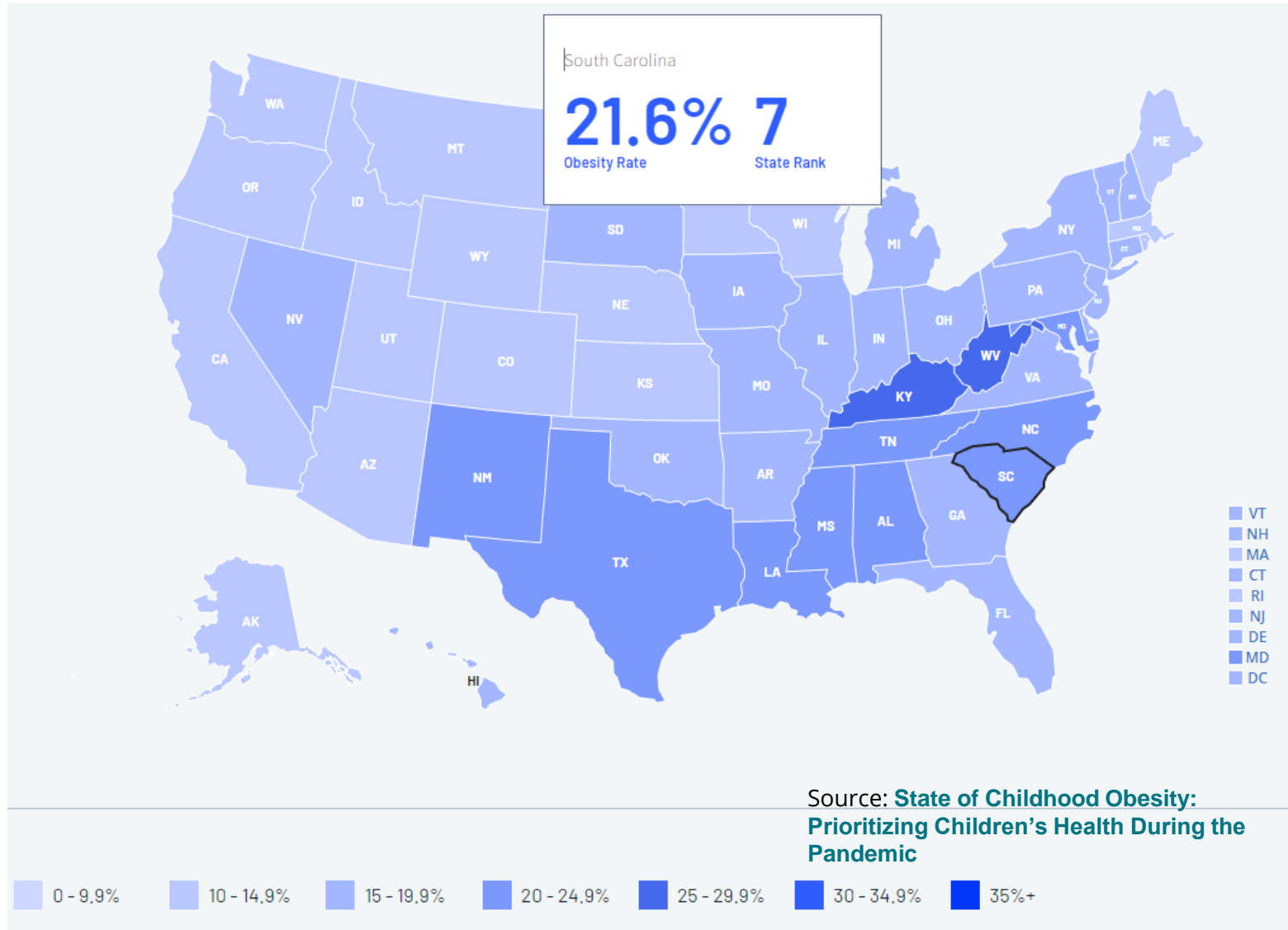
\* Includes unknown race

# Opioids

Number of Drug Overdose Deaths by Intent  
South Carolina, 2012-2021  
Occurrence Data

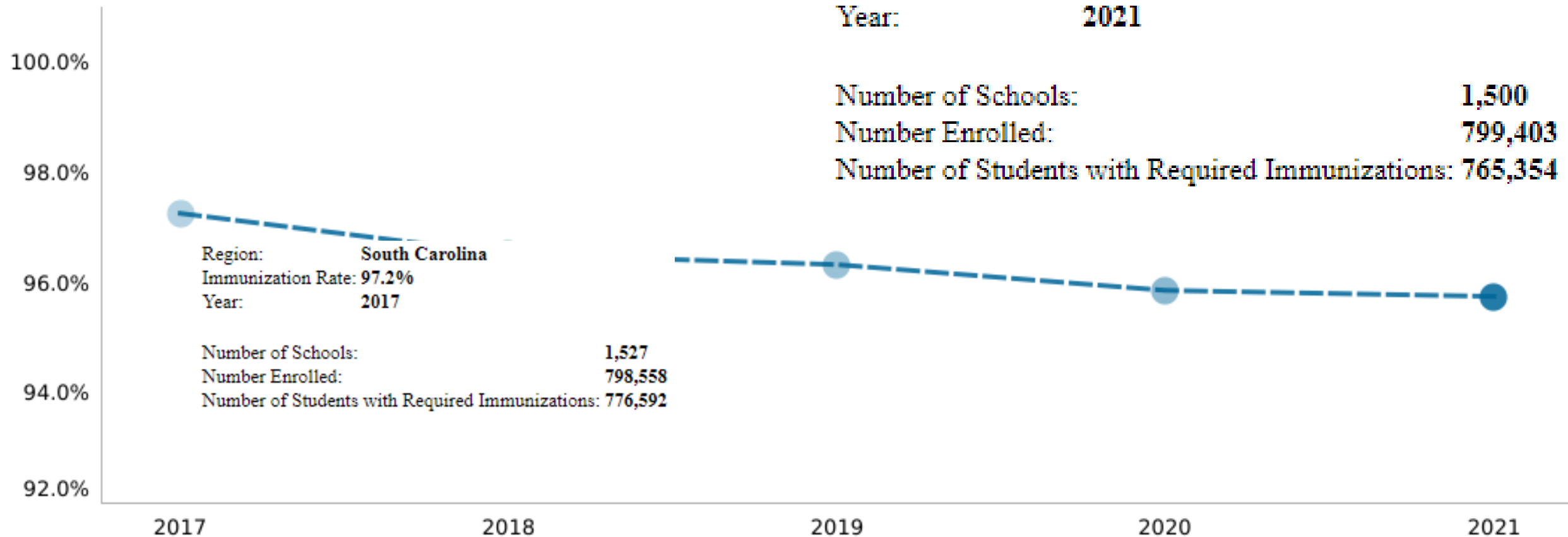


# Obesity



# Childhood Immunizations

## Students with Required Immunizations



Region: South Carolina  
Immunization Rate: 95.7%  
Year: 2021

Number of Schools: 1,500  
Number Enrolled: 799,403  
Number of Students with Required Immunizations: 765,354

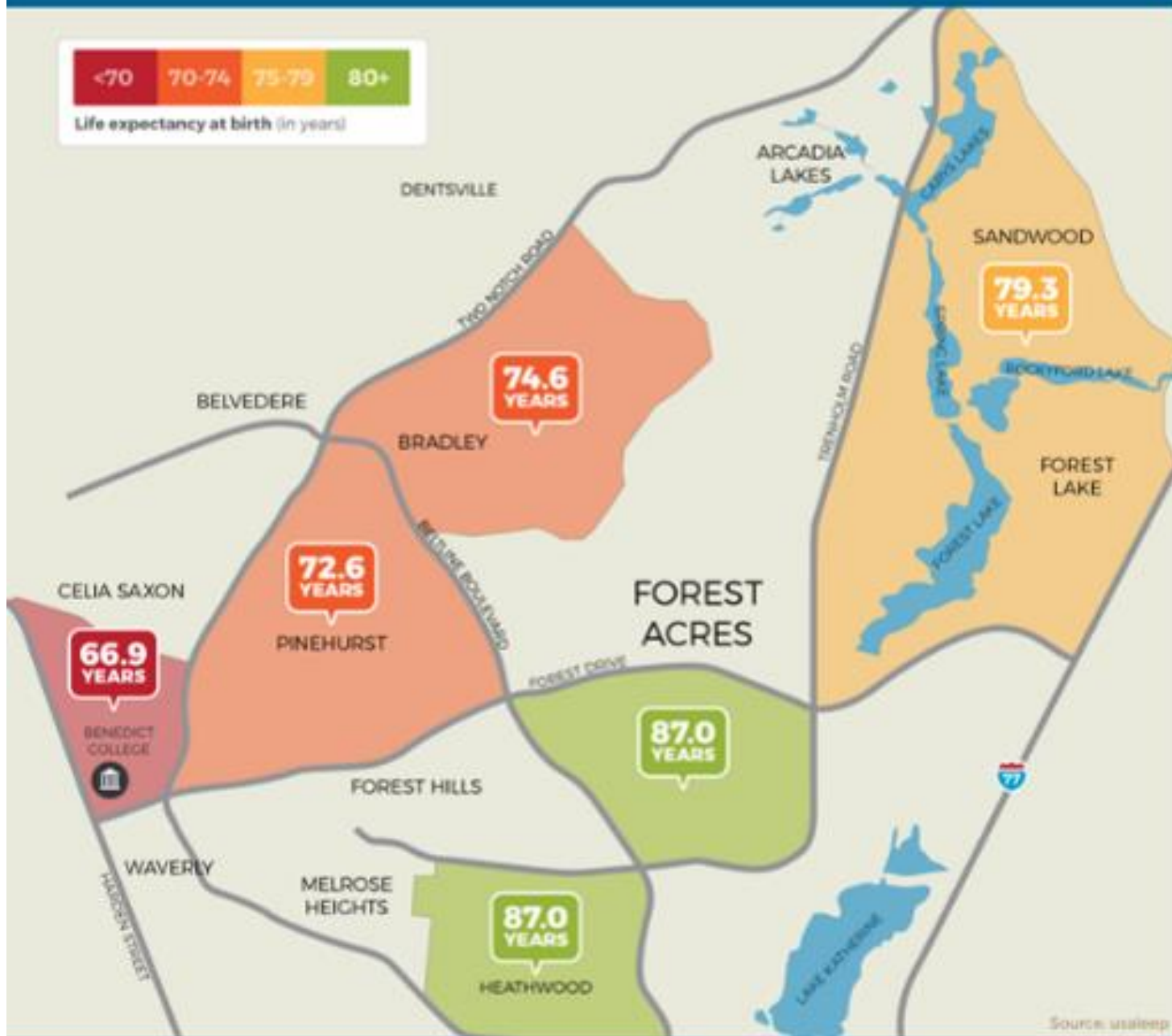
Region: South Carolina  
Immunization Rate: 97.2%  
Year: 2017  
Number of Schools: 1,527  
Number Enrolled: 798,558  
Number of Students with Required Immunizations: 776,592

# Addressing Pre-Existing Health Disparities

# Life Expectancy

It's a short distance to a wide gap in life expectancy.

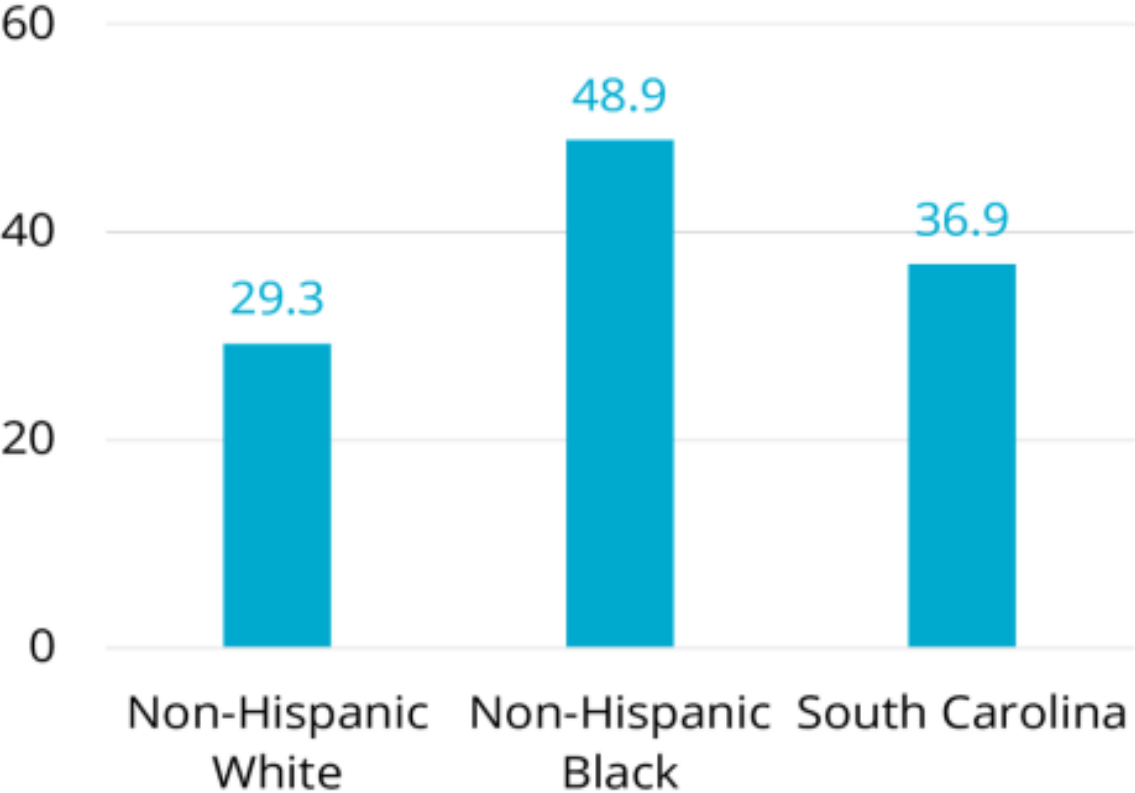
COLUMBIA, SOUTH CAROLINA





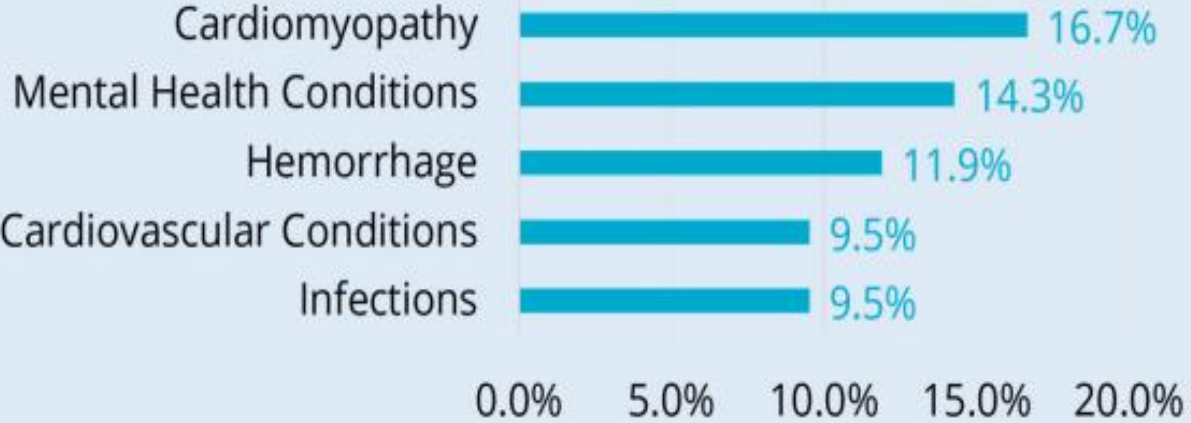
# Maternal Mortality

**PRMR, by Race and Ethnicity**



Note: Years 2018-2019; Rate per 100,000 live births.

**Leading Causes of Pregnancy-related Deaths**



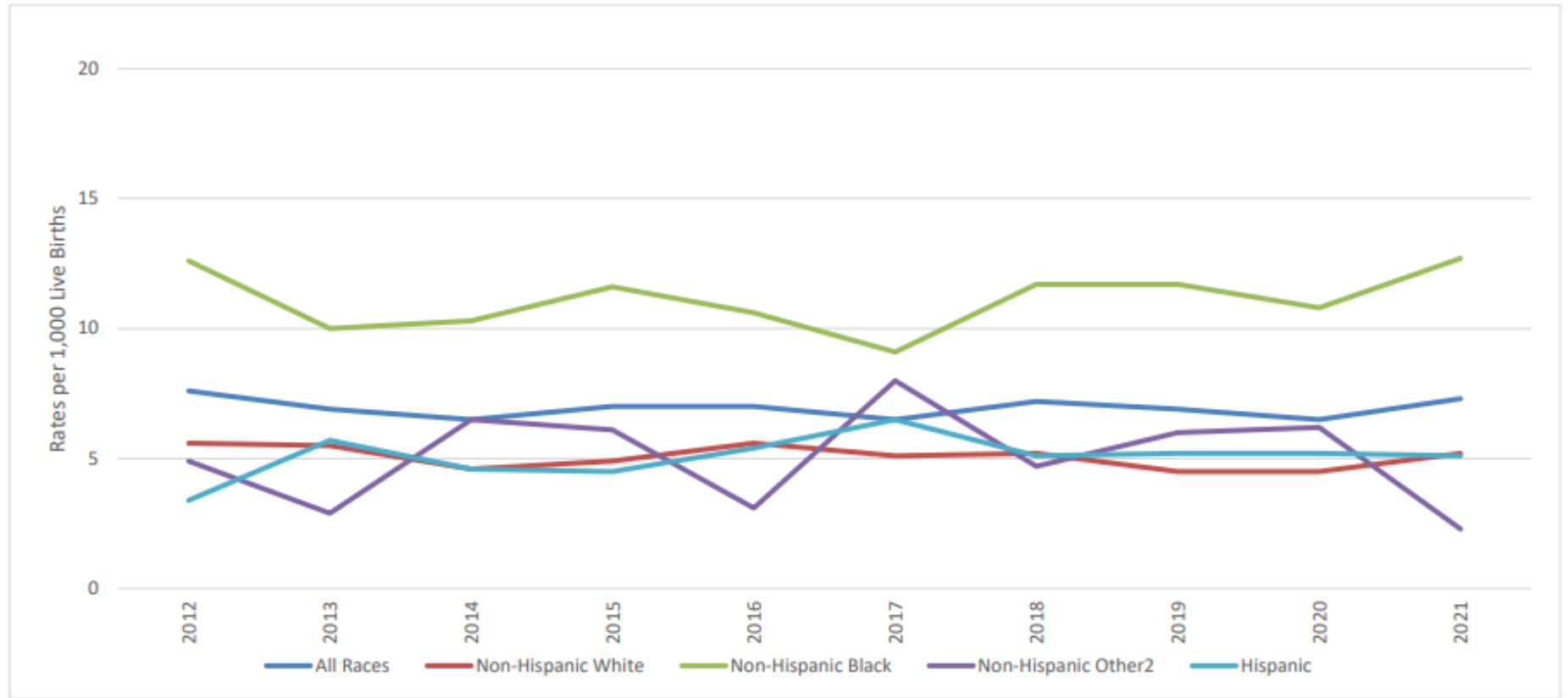
Note: Years 2018-2019

**In SC, the non-Hispanic Black population experienced a 67% higher pregnancy-related mortality ratio than their White counterparts in 2018 and 2019.**

Source: S.C. Maternal Morbidity and Mortality Review Committee

# Infant Mortality

## South Carolina Infant Mortality Rates<sup>1</sup> by Race and Hispanic Origin of Mother Residence Data, 2012-2021



	2012	2013	2014	2015	2016	2017	2018	2019	2020	2021
All Races	7.6	6.9	6.5	7.0	7.0	6.5	7.2	6.9	6.5	7.3
Non-Hispanic White	5.6	5.5	4.6	4.9	5.6	5.1	5.2	4.5	4.5	5.2
Non-Hispanic Black	12.6	10.0	10.3	11.6	10.6	9.1	11.7	11.7	10.8	12.7
Non-Hispanic Other <sup>2</sup>	4.9	2.9	6.5	6.1	3.1	8.0	4.7	6.0	6.2	2.3
Hispanic	3.4	5.7	4.6	4.5	5.4	6.5	5.1	5.2	5.2	5.1

<sup>1</sup>Rates per 1,000 live births

<sup>2</sup>Rates per 1,000 live births. Rates calculated with 20 or fewer deaths are unreliable and should be used cautiously.

Source: SC DHEC, Vital Statistics

# Infant Mortality

## Infant Mortality Rates<sup>1</sup> with 95% Confidence Intervals<sup>2</sup> South Carolina, 2012-2021 (Residence Data)

Year	Number of Live Births	Number of Infant Deaths	Infant Mortality Rate	95% Confidence Intervals
2012	57,100	435	7.6	(6.9, 8.3)
2013	56,743	389	6.9	(6.2, 7.6)
2014	57,631	372	6.5	(5.8, 7.2)
2015	58,135	405	7.0	(6.3, 7.7)
2016	57,337	401	7.0	(6.3, 7.7)
2017	57,030	371	6.5	(5.8, 7.2)
2018	56,668	406	7.2	(6.5, 7.9)
2019	57,044	391	6.9	(6.2, 7.6)
2020	55,713	364	6.5	(5.9, 7.2)
2021	57,179	416	7.3	(6.6, 8.0)

Cause of Infant Death (ICD-10 Codes)	Total	Under 1 Day	1-6 Days	7-27 Days	Neonatal (<28 days)	Post-Neonatal (28-364 days)
<b>TOTAL INFANT DEATHS</b>	416	135	66	68	269	147
CONGENITAL MALFORMATIONS, ETC. (Q00-Q99)	77	23	21	13	57	20
DISORDERS RELATED TO SHORT GESTATION, ETC. (P07)	49	46	1	-	47	2
NEWBORN AFF BY MATERNAL COMP OF PREG (P01)	35	31	4	-	35	-
SUDDEN INFANT DEATH SYNDROME (R95)	27	-	-	3	3	24
ACCIDENTS (V01-X59,Y85-Y86)	26	-	1	-	1	25
BACTERIAL SEPSIS OF NEWBORN (P36)	21	5	4	12	21	-
NEWBORN AFF BY COMP OF PLACENTA, ETC. (P02)	14	10	1	2	13	1
INTRAUTERINE HYPOXIA AND BIRTH ASPHYXIA (P20-P21)	13	1	6	6	13	-
DZ OF CIRCULATORY SYSTEM (I00-I99)	9	-	-	-	-	9
ASSAULT (HOMICIDE) (X85-Y09,Y87.1)	9	1	-	-	1	8
RESPIRATORY DISTRESS OF NEWBORN (P22)	8	1	6	1	8	-
ATELECTASIS (P28.0-P28.1)	8	3	4	1	8	-
ALL OTHER CAUSES	120	14	18	30	62	58

# Social Determinants of Health



# **Role of the Family Physician**

# Family Physicians

Assess Risk Factors,  
Indicators

Provide Resources  
for Outside  
Care/Counseling

Urge Healthy  
Habits of Diet,  
Exercise

Continue to  
Practice  
Compassionate  
Understanding

Let Them Know  
They're Not Alone

# Our Way Forward

***DHEC is committed to advancing health and environmental equity with our partners and community members by:***

- Increasing awareness
- Improving access
- Providing resources and information
- Engaging communities, forming partnerships
- Supporting healthier head starts early in life
- Educating and informing through a health and environmental equity lens

**Thank You!**